

Northeast Florida Regional Council: Resiliency Program

Beth Payne, Chief Executive Officer

Fara Ilami, Regional Resiliency Manager

May 15, 2025

City of Jacksonville Waterways Commission Meeting



Agenda

Northeast Florida Regional Council Structure

Resiliency Program Overview

- Mission
- Spheres of Action
- Resilient First Coast Collaborative

Examples of Resiliency Program Work Relevant to COJ Waterways

- Regional Resiliency Action Plan
- Military Installation Readiness Review
- South Atlantic Salt Marsh Initiative partnership

Wrap-up

Northeast Florida Regional Council Structure

Northeast Florida Regional Council

serving

Baker, Clay, Duval, Flagler, Nassau, Putnam and St. Johns counties



- Regional Councils were formed under Florida Statute, Chapter 163, to:
“...establish an organization that will promote area-wide coordination and related cooperative activities of federal, state, and local governments ensuring a broad-based regional organization that can provide a truly regional perspective and enhance the ability and opportunity of local governments to resolve issues and problems transcending their individual boundaries.”
- NEFRC was established in 1977 by an interlocal agreement among all seven counties.
- There are ten Regional Planning Councils in the State, covering all 67 counties.



Our Mission

The mission of the NEFRC is to celebrate the unique assets of Northeast Florida and to engage its people, businesses, governments and organizations.

In doing so we:

- Communicate Issues
- Convene Stakeholders
- Collaborate with Others
- Calculate and Analyze
- Construct Solutions

The People of NEFRC

Board of Directors

- 32 total Board members
- 2/3 are local elected officials & 1/3 are gubernatorial appointees
- Each county has four members
- Ex-officio non-voting members include:
 - Department of Transportation
 - Department of Environmental Protection
 - FloridaCommerce
 - St. Johns River Water Management District

Leadership*

- President
- Hon. James Renninger
Clay County
- 1st Vice President
- Hon. James Bennett
Baker County
- 2nd Vice President
- Hon. Ken Amaro
City of Jacksonville
- Secretary/Treasurer
- Mr. Darryl Register
Baker County

Duval County Board Members

- Honorable Mike Gay
- Honorable Ken Amaro
- Mayor Lynch, Town of Baldwin
- Ms. Elaine Brown,
Gubernatorial Appointment

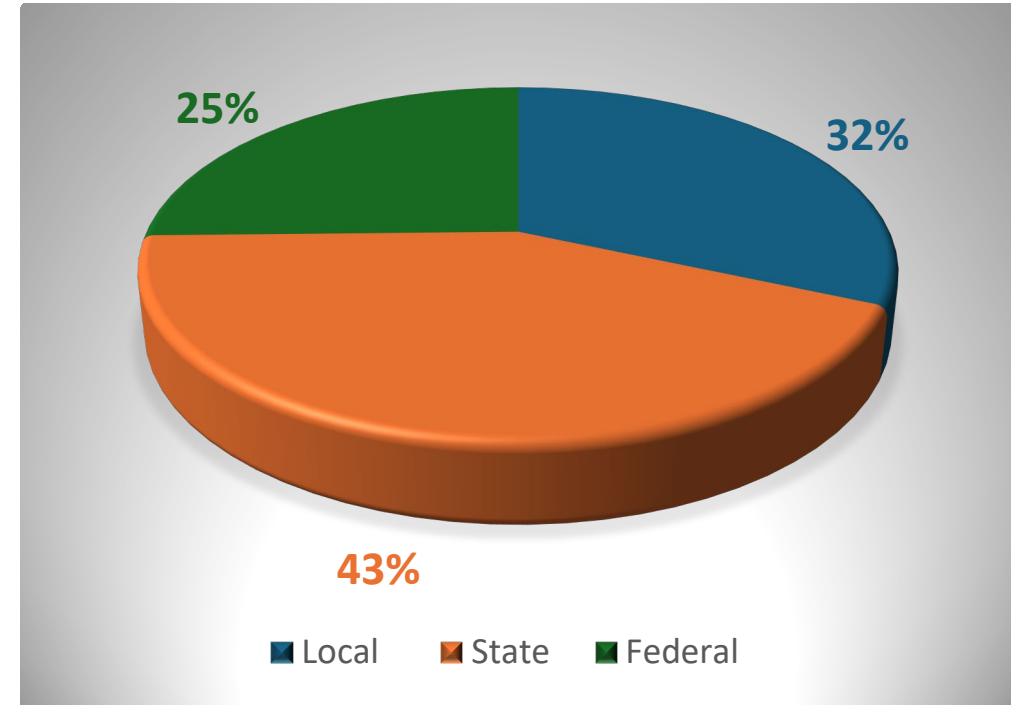
*Officers change in October at the start of the new fiscal year and rotate among the seven counties.

FY 2024-25 Revenue

Contractual highlights include:

- *Post Disaster Recovery* work funded by **U.S. Economic Development Agency**
- *Military Installation Readiness Review* funded by **Department of Defense**
- *Healthcare Coalition* program funded by **Florida Department of Health**
- *Local Emergency Planning Committee* funded by **Florida Division of Emergency Management**
- *Shrimping Market Study* funded by **Florida Commerce**
- *City of St. Augustine Vision Plan* funded by **the City of St. Augustine**

FY 2024-2025 Revenue by Source



FY 2024-2025 Total Revenue
\$3,584,518

NEFRC Staff



Elizabeth Payne
Chief Executive Officer



Eric Anderson
Deputy CEO



Donna Starling
Chief Finance Officer



Sheron Forde
HR & Exec. Assistant



Apurva Jamb
Sr Regional Planner



Robert Jordan
Sr. Regional Planner



Monica Dominguez
Economic Dev.
Program Manager



Fara Ilami
Regional Resiliency
Manager



Jack Shad
Economic Dev.
Project Manager



Annie Sieger
Sr. Regional Planner



Carol Main
Accounting & Admin.
Assistant



Kenajawa Woody
Communications
Coordinator



Leigh Wilsey
Healthcare Coalition
Program Manager



Tyler Nolen
Special Projects
Coordinator



Cassidy Taylor
Economic Recovery
Coordinator



Summer Jones
Transportation
Disadvantaged
Coordinator



Andrew Prokopiak
Sr. Regional Planner

Our team has spent decades building a vast network of federal, state, local and community partnerships that make regional planning more effective and comprehensive.

NEFRC Programs



Emergency Preparedness



Economic Development



Resiliency



Community Development



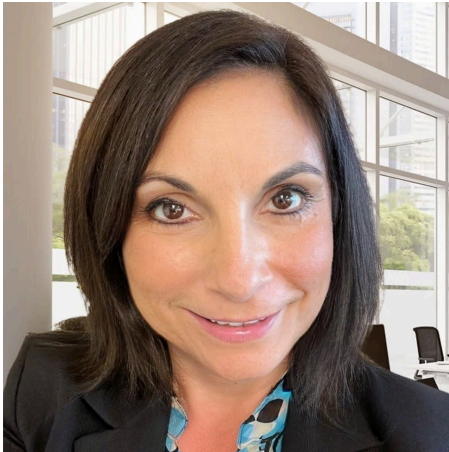
Resiliency Program Overview

NEFRC Resiliency Program

Mission

To build resilience to climate-related hazards for the communities of Northeast Florida

Team



Fara Ilami



Andrew Prokopiak



Apurva Jhamb

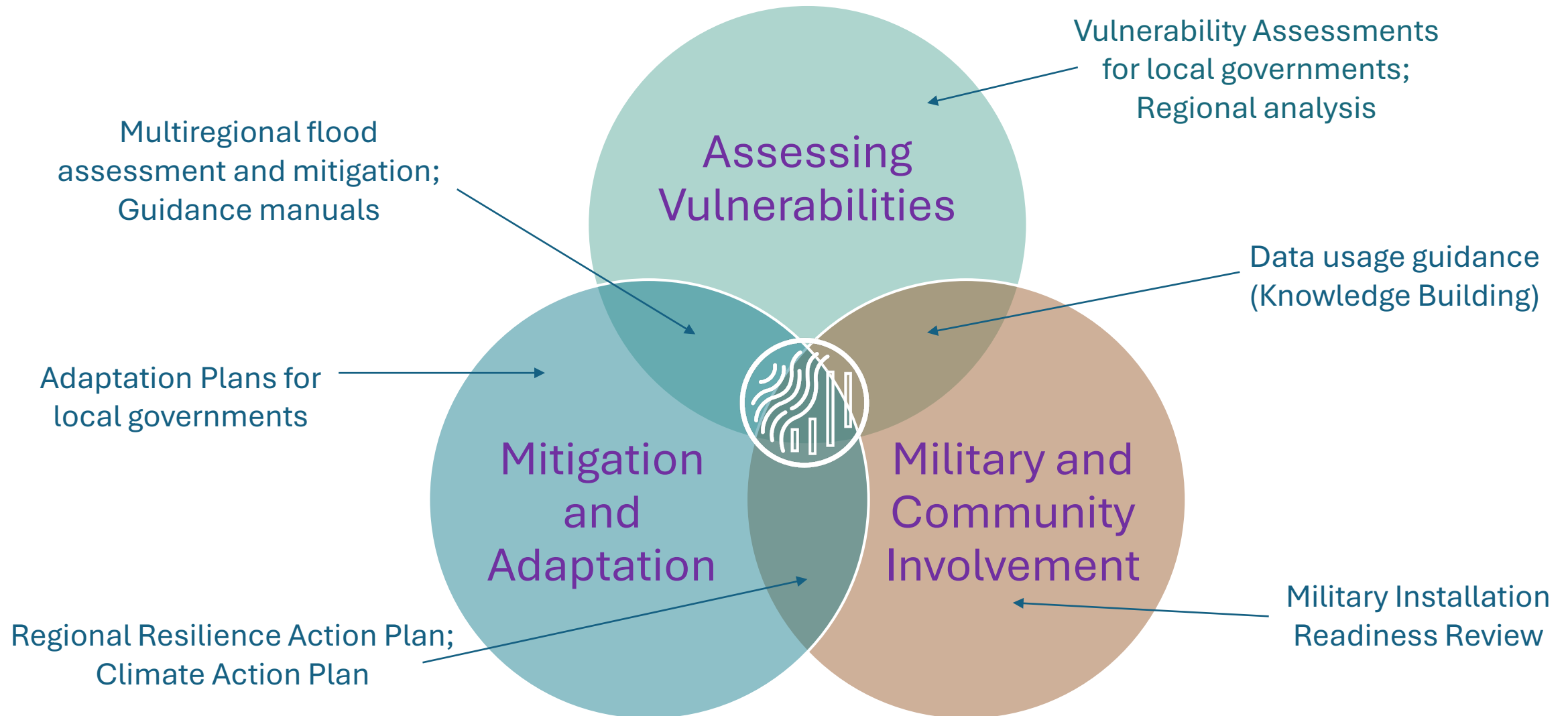


Robert Jordan



Cassidy Taylor

NEFRC Resiliency Program: Spheres of Action





RESILIENT First Coast

Leadership Team



Anne Coglianese
Co-Chair



Jessica Beach
Co-Chair



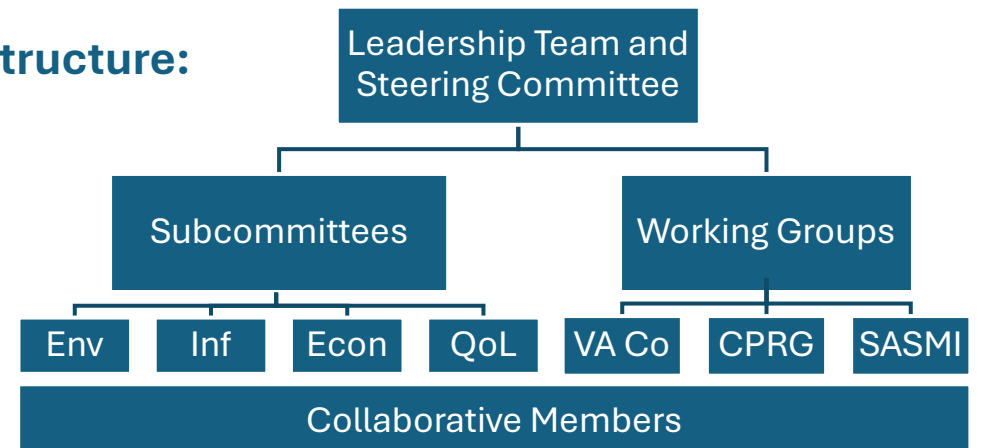
Fara Ilami
Coordinator

<https://www.resilientfirstcoast.com/>

Examples of Integrative Work: Regional Resilience Action Plan; Regional vulnerability assessment coordination, analysis, and manual; addressing aquatic connectivity in resilience context

- **Entity Type:** Regional Resiliency Collaborative for Northeast Florida
- **Vision:** Resilient First Coast will actively promote regional cooperation on initiatives that improve the environment, quality of life, infrastructure, and economic resilience of Northeast Florida to adapt and thrive in the face of acute shocks and chronic stresses related to climate change.
- **Membership:** local governments, businesses, non-profit organizations, academia, and federal/state agencies.

- **Structure:**



Examples of Resiliency Program Work Relevant to COJ Waterways

Regional Resilience Action Plan

Phase I

- Background and establishing need
- Goals, objectives, and best practices

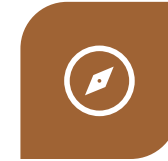
Phase II

- Implementable Actions with Metrics
- Funding streams and partnerships to be leveraged
- Incorporation of significant findings from regional vulnerability assessment analysis

Action Buckets



FACILITATE

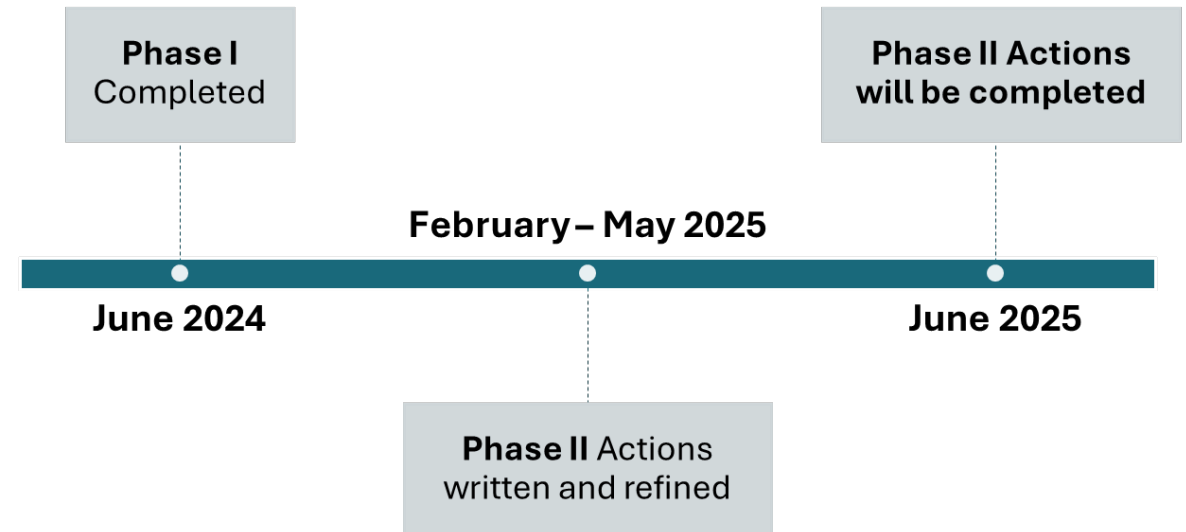


GUIDE



ANALYZE

Basic Timeline



ACTION EXAMPLE

Promote the conservation, protection, and restoration of ecologically significant natural ecosystems

SUB-ACTIONS

- Support efforts to conserve and restore estuarine and freshwater wetlands
- Encourage biodiversity by protecting native ecosystems and planting native species
- Support national, state, and local parks and nature preserves
- Promote health of marine and estuarine ecosystems that support fisheries



ACTION EXAMPLE

Support shoreline stabilization of natural and modified shorelines

SUB-ACTIONS

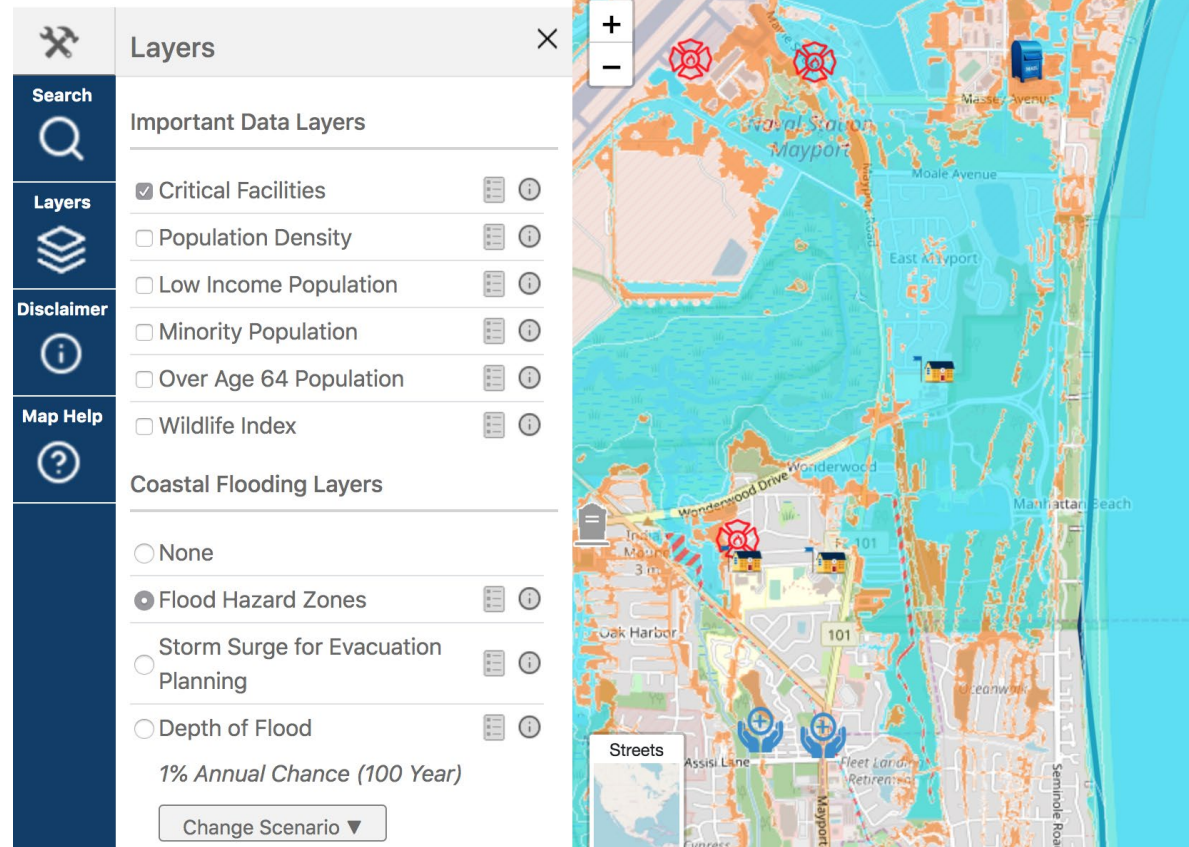
- Draft example ordinances for shorelines stabilization practices, including sea wall height, material selection, and improved water quality
- Encourage use of living shorelines or incorporate nature-based features where possible



Inventory critical and significant assets

SUB-ACTIONS

- Compile and assess local vulnerability assessments
- Maintain inventory of regionally significant assets



Military Installation Readiness Review

What is the MIRR?

- Region-wide initiative to assess environmental, infrastructural, and social risks that could impact military operations and evaluate and prioritize measures to address them.
- **Goal:** to enhance mission assurance by increasing community resilience
- **Installations:** NAS Jax, NS Mayport, MCSF Blount Island, JTC Camp Blanding
- **Expected Results:** implementable projects across variety of infrastructure types



Relevance

- Assesses impacts on environment surrounding military installations outside the fence line
- Prioritizes nature-based solutions where appropriate
- Provides framework to address shoaling and other issues via Technical Advisory Committee



What is the South Atlantic Salt Marsh Initiative (SASMI)?:

- Network of over 300 partners across NC, SC, GA, and FL with a goal to enhance the long-term abundance, health and resilience of **1 million acres of salt marsh** to ensure its survival

SASMI Work:

- Conservation Plan, Communication, and Implementation
- Project: Nature-Based Solutions in Vulnerable Communities
 - NEFRC lead in FL in partnership with North Florida Land Trust
 - Includes community engagement and science-based analysis



MARSH FORWARD

A REGIONAL PLAN FOR THE FUTURE
OF THE SOUTH ATLANTIC COAST'S
MILLION-ACRE SALT MARSH ECOSYSTEM

A COLLABORATIVE
EFFORT OF THE



SOUTH
ATLANTIC
SALT
MARSH
INITIATIVE

Northeast Florida Shrimping Industry Market Study

- NEFRC was awarded a Community Planning & Technical Assistance grant from Florida Commerce to develop a market study for the shrimping industry in Duval, Nassau, & St. Johns Counties
- This study will provide recommendations for shrimping stakeholders to:
 - Support the expansion of small shrimping businesses
 - Encourage the use of market-friendly & sustainable shrimping practices
 - Cultivate a sense of community character in historic shrimping districts
 - Strengthen the regional food economy



The background is a solid dark teal color. A large, lighter teal semi-circle is positioned on the right side of the image, with its flat edge facing left. A thin, vertical teal line runs from the top to the bottom of the image, passing through the center of the semi-circle.

Wrap-Up

Why Work Regionally?

Benefits of regional collaboration include:

- Improves Quality of Life
- Helps in solving large and complex issues
- Protects the interests of all
- Improves efficiency and effectiveness
- Advocates for the Region



Wrap-Up

Regional Resilience Collaboration:

- Leverages best practices and lessons learned from regional partners
- Leans on sound science and regional data
- Requires adaptable actions at the local scale

Benefits:

- Reduces cost and lift for individual municipalities
- Minimizes impacts of disruptive events
- Increases the impact of interventions



Contacts

Beth Payne: epayne@nefrc.org

Fara Ilami: filami@nefrc.org